



Date: January 14, 2024

To: Mayor and Members of the City Council

From: Aram Chaparyan, City Manager

By: Carlos Huizar, Management Associate | CHuizar@TorranceCA.gov

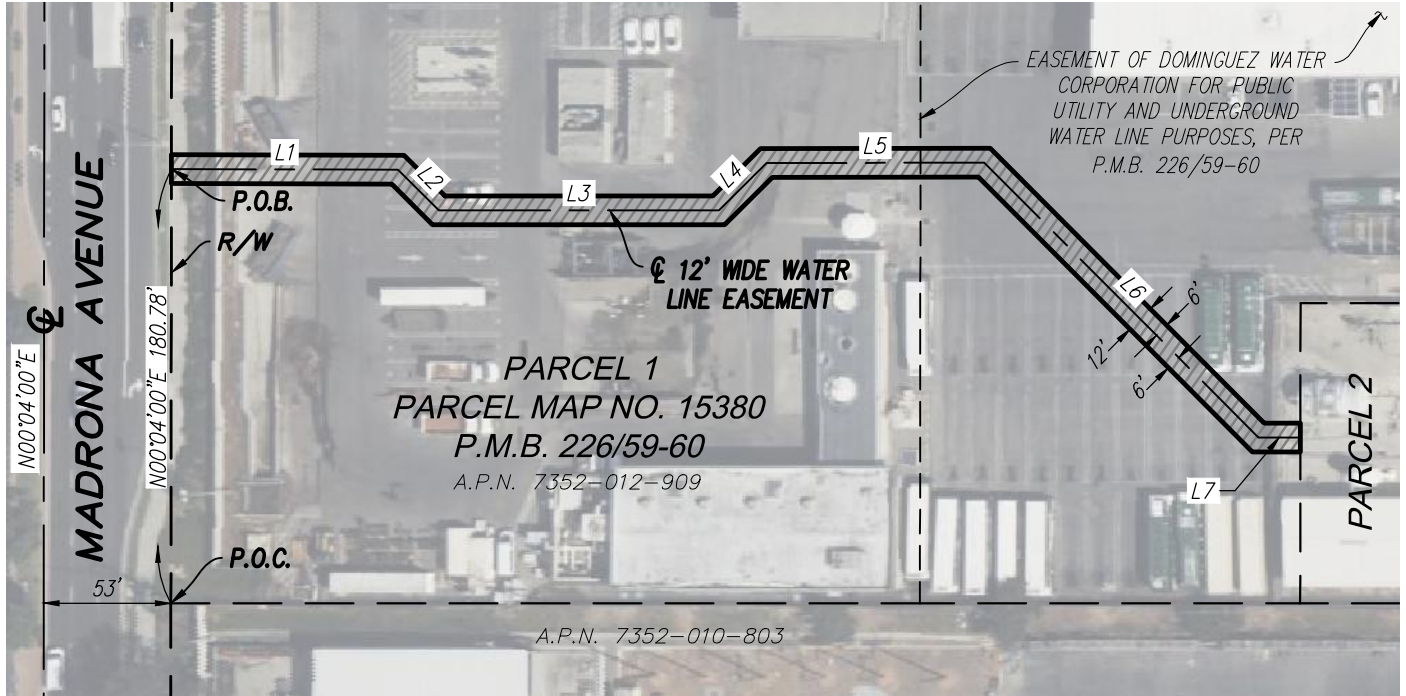
Subject: **Supplemental Material #1 for Item 8M**

DISCUSSION

Staff received a request from Councilmember Gerson to provide an exhibit displaying the updated easement area overlayed onto satellite imagery, which is included as Attachment 1.

ATTACHMENT

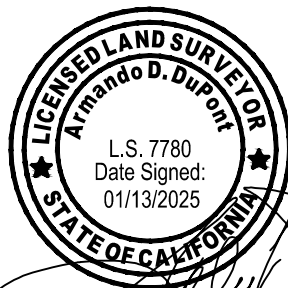
1. Exhibit B – Overlayed onto Satellite Imagery

EXHIBIT "B"**PLAT TO ACCOMPANY LEGAL DESCRIPTION****WATER LINE EASEMENT****APN 7352-012-909****APPROXIMATE ADDRESS:****20500 MADRONA AVENUE, TORRANCE, CA 90503****STATE OF CALIFORNIA****LINE TABLE**

LINE #	DIRECTION	LENGTH
L1	S89°52'47"E	94.42'
L2	S45°16'53"E	24.05'
L3	S89°57'47"E	116.59'
L4	N45°04'01"E	28.01'
L5	N89°56'12"E	90.78'
L6	S44°55'59"E	161.63'
L7	S89°59'51"E	17.52'



0 40 80
 SCALE: 1"=80'

**Legend**

- CENTER LINE
- LOT LINE
- P.O.B. POINT OF BEGINNING
- P.O.C. POINT OF COMMENCEMENT
- WATER LINE EASEMENT
- R/W RIGHT OF WAY

CAL VADA
SURVEYING, INC.

411 JENKS CIRCLE, SUITE 205, CORONA, CA. 92880-1782

PHONE: 951-280-9960

FAX: 951-280-9746

Job No. 22160-2

Drawn By: MN

Date: 01/13/2025

www.calvada.com

EXHIBIT "B"

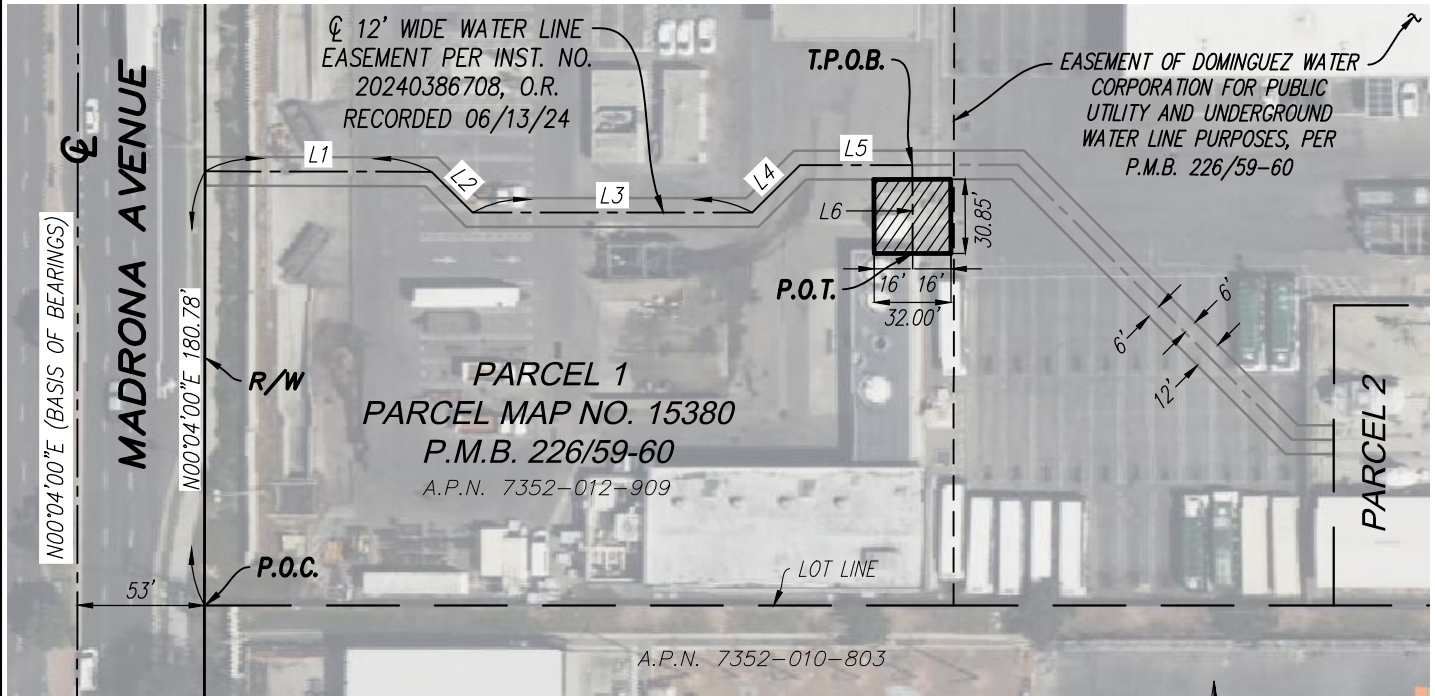
PLAT TO ACCOMPANY LEGAL DESCRIPTION

WATER LINE EASEMENT

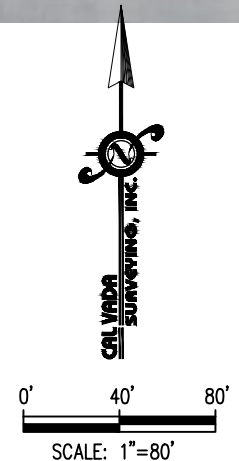
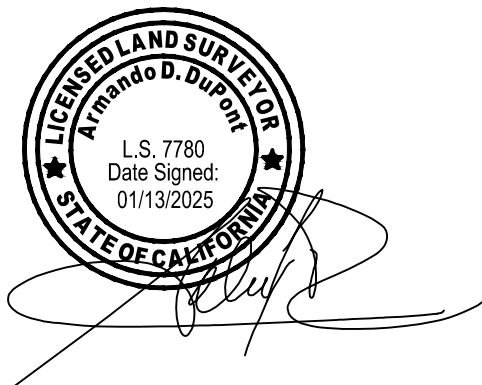
APN 7352-012-909

APPROXIMATE ADDRESS:

20500 MADRONA AVENUE, TORRANCE, CA 90503
STATE OF CALIFORNIA



LINE TABLE		
LINE #	DIRECTION	LENGTH
L1	S89°52'47"E	94.42'
L2	S45°16'53"E	24.05'
L3	S89°57'47"E	116.59'
L4	N45°04'01"E	28.01'
L5	N89°56'12"E	46.85'
L6	S00°03'48"E	36.85'



Legend

- CENTER LINE
- LOT LINE
- T.P.O.B. TRUE POINT OF BEGINNING
- P.O.C. POINT OF COMMENCEMENT
- P.O.T. POINT OF TERMINATION
- ▨ WATER LINE EASEMENT
- R/W RIGHT OF WAY

CAL VADA

SURVEYING, INC.

411 JENKS CIRCLE, SUITE 205, CORONA, CA. 92878-5038

PHONE: 951-280-9960

FAX: 951-280-9746

Job No. 22160-3

Drawn By: CE

Date: 01/13/2025

www.calvada.com